

Shepherd's Voice

Volume 10 • Issue 12 A monthly newsletter of Good Shepherd Lutheran Church December 2013

Points of Interest

- 2 Good Shepherd Book Club
- 3 Interim Ministry Update
- 4 Ameriprise Day of Service
- 7 Celebrating Advent at GS
- 8 Council Mtg. Highlights

January Newsletter
Articles Due December 20



December

**Good Shepherd
Lutheran Church
4000 Clayton Road
Concord, CA 94521
925-682-8410
gsoncord.com**

**Worship Schedule:
8:30 a.m. and 11:00 a.m.**

A Message from our Interim Pastor

Advent.
Coming.

Well-meaning believers often say, "In Advent we await the birth of the Christ child." But Jesus was already born 2,000 years ago. So are we really saying Advent is an exercise in *re-enacting* awaiting the birth of Jesus, the coming of the Christ?

*"We are all meant to be mothers of God. For God is always needing to be born."
Meister Eckhart, 13th Century Christian mystic*

Advent is not merely a history lesson; Advent opens us to see that Christ is always coming to us. With the dawn of each new day, Christ comes anew into the pain and joy of our hearts and this world. The love and mercy of God needs to become incarnate every day so it can shine brilliantly wherever healing and justice and peace are desperately needed or thankfully celebrated.

Advent calls us to see that each day is pregnant with possibilities. So this Advent, let's intentionally *prepare*, attending to what God is birthing in us and through us. Let's set aside "Christmas shopping" long enough to contemplate the world-changing ramifications of Christ's mercy poured out *today* – poured out even through the prayers, words and actions of believers like you and me. Let's enter into Advent deliberately and receive the gifts this season brings: patience, silence and speech, hope, and family.

Sundays and Seasons, the ELCA's worship-planning guide, suggests a week-by-week focus that can serve as a guide for your personal Advent meditations. I invite you to take a few moments with these Bible readings each week – and may we be mindful of Christ's love birthing new possibilities in our lives, through this congregation, and throughout the world.

Week 1: The Gift of Patience (Ps. 37:7; Isa. 40:31; Heb. 12:9)

Waiting isn't easy, but we are called to wait patiently for the Coming One, staying alert to the signs of God's reign and the guidance of the Holy Spirit.

Continued on Page 2

Interim Pastor Message - Continued from Front Page

Week 2: The Gift of Speech and Silence (Eccl. 3:1, 7; Ps. 62:1; Ps. 40:10; Ps. 19:14)

For everything there is a season... a time to keep silence and a time to speak.

Week 3: The Gift of Hope (Is. 42:16, 30:26, 11:6, 35:1, and 7:14)

Hope is a word on which our future rests. We can't know what will come, but with faith we place our hope in Christ.

Week 4: The Gift of Family (Matt. 1)

Here is the family tree from Abraham to Jesus – a reminder of God's work from generation to generation.

– Interim Pastor Lori Eickmann



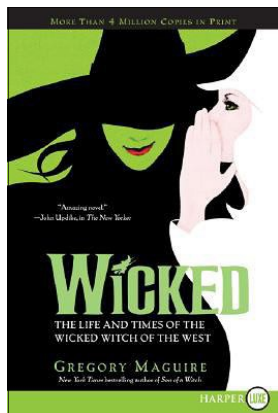
Greetings from Ray and Helen Ollila!
Picture shared by Linda Mahloch

'Tis the Season for Care Bears

Following a Good Shepherd tradition, we will help some needy folks have a little more joy this holiday season. Please check out the small Christmas tree in the Narthex. It's decorated with bears describing special wishes along with a little background information on the recipient. As you are able, choose a bear from the tree, purchase the gift, wrap it, attach the bear to the present and deliver it to church. Our Friends Feeding Friends group will sort and deliver these gifts just prior to Christmas. If you have any questions, please contact Dana Deniston at 768-9087 or Linda Rodemsky at 864-9266. Or email us at: friendsfeedingfriends@yahoo.com



GOOD SHEPHERD BOOK CLUB
Tuesday, January 7, 2014.



Our book club at Good Shepherd is growing! We have great reads and great fellowship. If you've ever thought of joining us, come to our meeting on January 7, 2014 at 7:30 pm in the Fireside Room. Our choice is the incredible ***Wicked: The Life and Times of the Wicked Witch of the West*** by Gregory Maguire.

New York Times bestseller *Wicked* views the land of Oz, its inhabitants, its Wizard, and the Emerald City, through a darker and greener (not rosier) lens. Brilliantly inventive, *Wicked* offers us a radical new evaluation of one of the most feared and hated characters in all of literature: the much maligned Wicked Witch of the West who, as Maguire tells us, wasn't nearly as *Wicked* as we imagined.

Admit it, you're intrigued! See you there!

Questions? Contact Donna Albrecht at: donna-at-albrechts.com

Interim Ministry Update, December 2013

Steve and I have come up with a humorous way to break the tension when we are having a disagreement that seems to be going nowhere. One of us will suddenly smile and say in an exaggerated way, "So what I HEAR you saying is...!" And that reminds both of us that we aren't really listening to one another and need to reboot the conversation.

Active listening is, in fact, an excellent skill to develop – even if the phrase, "What I hear you saying..." could be mistaken for a parody of good listening skills. In our ever-more-polarized society, learning how to listen deeply – rather than just waiting for the other person to stop talking so we can make our point – can lead to true understanding even when there is not complete agreement.

Last month I attended a weeklong training in conflict mediation in the parish. The training was led by Richard Blackburn, the director of the Lombard Mennonite Peace Center in Illinois, which strives to strengthen congregations by helping people understand the roots of conflict and learn peaceful ways to resolve it.

Here are some highlights from the week:

*Disagreements and conflicts are a normal part of life in human community. Conflict is *not* inherently negative and can lead to growth and stronger relationships when it is understood to be a sign that important issues need addressing.

*In any group of human beings – whether in a congregation, classroom, office, club or home – everyone in the group has an impact on how the group functions. So when problems arise, everyone has a part in how well or poorly the situation is addressed.

*Often the current conflict is *not* actually the core issue. When individuals or groups "hoard" hurts that have gone unresolved, a particular event can cause a conflict to erupt that is based in the unresolved past wounds.

*Listening skills are invaluable because we all have a hard time focusing objectively on an issue when we don't feel anyone thinks our opinions matter.

--Using "I" messages helps keep the person you are addressing from feeling defensive: "I felt foolish when I was interrupted during the meeting," rather than, "You made me angry when you interrupted me."

--Active listening means paraphrasing what you heard so the speaker knows you have *understood* them: "So you feel trivialized when you are interrupted." (*You* messages are necessary here!)

The training included specific processes for problem solving, mediating conflict between individuals, and mediating conflict with an entire congregation.

Jesus himself teaches us how to handle conflict. In Matt. 18:15-22, he lays out a way to handle conflict with someone who has hurt you: verse 15 is "negotiation," verse 16 is "mediation" and verse 17 is "arbitration"! And when you have hurt someone else, the same process is apparent in Matt. 5:23-24 (negotiation), Philippians 4:2-3 (mediation) and 1 Cor. 6:1-6 (arbitration).

I hope you are intrigued enough to look these up! Anything we can do during this interim time to strengthen understanding and relationships will help GSLC experience effective ministry with your next pastor.



Leisure Lunch News

Join us on Tuesday, December 3, at noon for a festive holiday luncheon! Our menu for December is your favorite vegetable soup (I call it the LL veggie soup), carrot soup, and a beef and pastina soup that Bob will make. Of course, soup will be accompanied by some nice, crunchy bread!

December Birthdays

Elizabeth Kich	04
Richard Koehler	05
Kathy Price	05
Carter Munson-Ring	06
Wilma Seppala	06
Holly Pereira	07
Lori Randolph	07
Aimee Olmedo	08
Monica Berg	13
Madelyn Setchell	14
Lilah Roza	17
Tyler Deniston	17
Lilah Roza	17
Matthew Castle	18
Carin Olson	18
Bob Ripley	19
Nicholys Porter	21
Karl Bohling	22
Dylan Magic	23
Evelyne Kingwell	24
Judy Haier	25
Betty Chambers	29
John Nelson	29
Allison Buchholz	31
Rosemary Fassl	31
Timothy Harless	31



JOIN GOOD SHEPHERD YOUTH FOR CHRISTMAS CAROLING

You are invited to join Good Shepherd youth to go caroling on Sunday, December 8. We will be meeting at the church at 2:00 p.m.

We are kicking off the Christmas Season, and one thing we are doing is going caroling. We want to visit our homebound friends and others who would like a special visit. Perhaps you have a friend we should visit.

We would like to have Good Shepherd members and friends join us. We plan to have "canned" music, so it is not *a capella*!

No auditions! We will arrange carpooling when we gather at 2:00 p.m. on Sunday, December 8.

When we return to the church we will have treats and maybe a little more singing!

Please contact Herb Yonge if you would like to join us and/or know a special person we should plan to visit.



GOOD SHEPHERD INCOME STATEMENT AS OF October 31, 2013			
	ACTUAL	BUDGET	OVER (UNDER) BUDGET
INCOME:			
Pledged	\$120,021	127,432	\$ (7,411)
Unpledged	20,309	22,293	(1,984)
Other (Tower, Rent, etc.)	92,780	94,687	(1,907)
TOTAL INCOME	\$233,110	244,412	(11,302)
LESS TOTAL EXPENSES	(221,548)	(243,945)	22,397
NET INCOME	\$ 11,562	467	\$ 11,095

AS NOTED ABOVE WE ARE IN A FAVORABLE POSITION WITH EXPENSE BEING LESS THAN INCOME. PLEASE NOTE PLEDGES ARE \$7411 LESS THAN BUDGET.

**Thank you for your
Financial Support**

Ameriprise Financial National Day of Service at Good Shepherd

Friends Feeding Friends welcomed Ameriprise Financial for their National Day of Service on November 15. For this focused event, the group cooked a Thanksgiving meal including a turkey and stuffing bake, fresh cranberry orange sauce, fresh garlic mashed potatoes with gravy, sautéed green beans, cheesecake and red velvet cupcakes and served 174 meals at the Concord shelter.



They also packed hundreds of food-to-go bags, hygiene bags, and Thanksgiving grocery boxes, and helped distribute the items.

Thank you Ameriprise for your support of Friends Feeding Friends! And, special thanks to Kay Bennett, Jamie Rodemsky, and Andrea Scott for helping guide the group. We were all blessed by this amazing experience.



Wedding Anniversaries

Adam and Sarah Mollwitz
December 3, 1996

Ron and Mary Figueroa
December 15, 1967

Alden and Helen Johnson
December 27, 1950



Youth Fundraiser

The trash can in the Narthex labeled "Youth Group" – Aluminum Cans.

Thanks for your can donations. Your support assists us in raising funds for youth group events.

Thanks from Friends Feeding Friends

Thanks to everyone for the turkey feather grocery store gift cards!

We distributed them to needy families and seniors in the community in the Thanksgiving grocery boxes.





The season of Advent means there is something on the horizon the likes of which we have never seen before. It is not possible to keep it from coming, because it will.

That's just how Advent works.

What is possible is to not see it, to miss it, to turn just as it brushes past you.

**And you begin to grasp what it was you missed,
like Moses in the cleft of the rock, watching God's hindquarters fade in the distance.**

So, stay. Sit. Linger. Tarry. Ponder. Wait. Behold. Wonder.

There will be time enough for running. For rushing. For worrying. For pushing.

For now, stay. Wait. Something is on the horizon.

—from *Night Visions* by Jan Richardson

Please plan on joining us for one or all of the Advent events planned at Good Shepherd. All are welcome!

December 8 - Caroling (see page 4 for information).

December 8 - There will be a Smorgasbord beginning at 5:00 p.m. in the Fellowship Hall
You are invited to bring a Scandinavian dish to share.
Questions, please contact Emilie Patton.

December 12 - Ruth's Circle will meet to bring cookies and prepare them for distribution to our homebound members. They will meet at 10:00 a.m. in the kitchen.

December 22 - Christmas Cantata at the 8:30 a.m. Worship Service.

December 22 - Fellowship will host a Cookie Exchange between services.
To Participate: bring a minimum of 3 dozen homemade holiday cookies and the recipes. You will go home with an assortment of delicious treats. There will also be tins ready to fill with some of your cookies for Friends Feeding Friends families.

December 24 - Christmas Eve Candlelight Service beginning at 7:00 p.m.

December 29 - Combined Worship Service at 9:30 a.m., Service of Lessons and Carols.

Good Shepherd Lutheran Church Annual Thanksgiving Dinner November 23, 2013

Thank you to our photographer, Joe Carlson.



THE GOOD SHEPHERD EVANGELICAL LUTHERAN CHURCH OF CONCORD, CA
COUNCIL HIGHLIGHTS – NOVEMBER 2013

Recognitions: New Confirmands, Lauren and Erin Wardle and Jacob Mollwitz.

The NA group that meets here on Wednesday nights was thanked and recognized for their generous donation to replace missing plants.

Laura Mott was recognized for her volunteer work, in the prompt processing of the Stewardship packets.

The Council and Call Committee had a lengthy discussion of the draft of documents the Call Committee is preparing, focusing on mutual expectations.

Both groups want to work on the Ministry Site Profile.

There was another joint meeting arranged for November 19 to review the entire MSP document.

Respectfully Submitted,
Donna Albrecht
Council Secretary

Council meeting on Nov. 19, 2013

Called to order by president Sue Hertless at 7:05 pm.

The sole purpose of this meeting was to discuss the Ministry Site Profile with the Call Committee.

Present for the Council; Sue Hertless, Jim Olson, Donna Albrecht, Herb Yonge, Laura Mott, and Linda Rodemsky.

Not present: Victor Olmedo, Emilie Patton, Jon Moss, Mark Deniston and Leone McCullough.

Call Committee present: John Mott, Greg Buchholz, Nils Anderson, Aimee Olmedo, Candace Bradley
The meeting adjourned at 8:44 pm.

Respectfully submitted,
Donna Albrecht
Council Secretary

December 2013

Sunday	Monday	Tuesday	Wednesday	Thursday	Friday	Saturday
1 8:30 a.m. Worship (CH) 9:30 a.m. Refreshment 9:50 a.m. Choir Practice 11:00 a.m. Worship (FH) Noon Confirmation (FR) 6:00 p.m. Women NA (FH)	2	3 Noon Leisure Lunch (FH)	4 3:00 p.m. Worship / Music Comm.. (FH)	5 9:00 a.m. Senior Food (FH) 2:00 p.m. Finance Comm. (FH) 6:30 p.m. Boy Scouts (FH) 7:00 p.m. Property/Long Range office	6 NOON Council Packet Reports due in office	7 10:00 a.m. DVLC Christmas Party (FH)
8 See Schedule above. 2:00 p.m. Caroling Youth and friends Meet at church 5:00 p.m. Smorgasbord (FH)	9	10 7:00 p.m. Council (FH)	11 7:00 p.m. NA (FH)	12 10:00 a.m. Ruth's Circle (Kitchen) Noon DVLC Board (FH) 6:30 p.m. Boy Scouts (FH)	13	14 10:00 a.m. Set-up Boy Scouts 20th Anniversary (FH) Event begins 2:00p.m.
15 See schedule above. NO Confirmation Class	16	17	18 9:00 a.m. Tabernacle Leadership Academy with Friends Feeding Friends 7:00 p.m. NA (FH)	19 6:30 p.m. Boy Scouts (FH) 9:00 a.m. Senior Food (FH)	20 January Newsletter Composed — Articles Due!	21 9:30 a.m. Friends Feeding Friends (Kitchen / FH))
22 Choir Cantata See schedule above. NO Confirmation Class Cookie Exchange — Between Services	23	24 Christmas Eve 7:00 p.m. Christmas Eve Worship (CH)	25 Christmas 7:00 p.m. NA (FH) Church Office Closed	26 6:30 p.m. Boy Scouts (FH) Church Office Closed	27	28 Private Event Noon (FH)
29 9:30 a.m. Combined Worship Service Lessons and Carols (CH) NO Confirmation Class	30	31	January 1 , 2014 Church Office Closed			

Friends Feeding Friends

An outreach ministry that serves the needy in our county

Friends Feeding Friends Highlights for the Past Month

Sarah Jean's
Dream at age 4

—
"So people who are
really hungry
have food."



- 434 Grocery bags distributed**
- 373 Hot Meals provided**
- 19 People helped with household furnishings**
- 13 Churches that helped FFF**
- 9 Shelters/Agencies that referred clients to FFF**

FFF is now one of 2 sites where the Tabernacle High School Leadership Academy students give back to the community through hands on service each month. The other site is the Food Bank of Contra Costa and Solano.

FFF helped a group of moms start a non-profit to serve needy families with children ages 0-12. They are now receiving requests from families as far away as the Central Valley!

FFF hosted Ameriprise Financial for their National Day of Service on November 15. What an amazing event this was and we were all blessed by this day.

FFF is on the county call list for non-profits willing to help people serve out their community service requirements. We have requested only people with non-violent offenses such as those with speeding tickets.

FFF continues to provide clothing to the Monument corridor families, and clothing, linens and food to 3 county shelters. We also continue to furnish the clients when they leave the shelters and transition to housing.

Our next FFF lunch at the shelter is on December 21, 2013. Meet at Good Shepherd at 9:30 to prep, or at the shelter at noon to serve. All are welcome to help at the lunch or any other time!!

Items needed this month: Holiday groceries, twin, full or queen size beds, end tables, dressers, coffee tables, new bed pillows, small dinettes and dining chairs, travel size shampoo, conditioner and lotion, new socks, beanies, gloves or mittens, blankets, light bulbs, dish soap. We appreciate all donations!

Have questions, want to help or know of someone needing help? Contact Dana Deniston (925)768-9087 or Linda Rodemsky (925)864-9266 or email: friendsfeedingfriends@yahoo.com

For we are
God's
workmanship
created in
Christ Jesus
to do good
works, which
God prepared
in advance for
us to do.
Ephesians
2:10

Good Shepherd
Lutheran Church
4000 Clayton Road
Concord, CA 94521
925-682-8410
gsconcord.com

Located east of the
Salvation Army
church between
West Street and
Mendocino Avenue
Concord, CA

Loaves & Fishes
catering kitchen:
510 Garcia, Suite H
Pittsburg, CA

Thank you once
more to all of
our faithful
supporters.
Because of you,
we can reach so
many more!

The North
Concord
Shelter:

2047 Arnold
Industrial Way,
Concord, CA
Parallel to
Highway 4

Know someone who needs help?

Call the Homeless
Hotlines at
800-799-6599 or
800-808-6444.

Call the Bay Area
Rescue Mission at
510-215-4868.

Call the Contra
Costa Crisis Cen-
ter at Call 211.

Worship Assistants December 1 – December 29, 2013

[illegible]

Good Shepherd Lutheran Church

4000 Clayton Road

Concord, CA 94521



Evangelical Lutheran Church in America
God's work. Our hands.

Good Shepherd Lutheran Church

Concord, CA

Executive Committee:

President: Sue Hertless, **Vice President:** Victor Olmedo, **Secretary:** Donna Albrecht
Member-at-Large: Laura Mott

Congregational Council

Donna Albrecht, Mark Deniston, Sue Hertless, Leone McCullough, Jon Moss, Laura Mott,
Victor Olmedo, Jim Olson, Emilie Patton, Linda Rodemsky, Herb Yonge

Ministry Staff:

Interim Pastor: Lori Eickmann - pastorlori@me.com

Office Administrator: Laura Mott - lauramott@gsconcord.com

Director of Instrumental Music: Open

Interim Organist: Lynne Davies

Choir Director: Phoebe J. Rosquist - phoebe@netzero.net

Contemporary Music Leader: Tom Deans Flegel - tdeans08@gmail.com

Sound/Technology: Jamie Rodemsky - jamier1263@gmail.com

Treasurer: Lynne Davies - finance@gsconcord.com

Financial Secretary: Laura Mott