

# Shepherd's Voice

Volume 10 • Issue 11 A monthly newsletter of Good Shepherd Lutheran Church November 2013

## Points of Interest

- 2 News from Pr. Ralph Supper
- 3 Interim Ministry Update
- 4 GS Thanksgiving Dinner
- 7 New Advent Paraments
- 8 Council October Minutes

December Newsletter  
Articles Due November 25



## November

**Good Shepherd  
Lutheran Church  
4000 Clayton Road  
Concord, CA 94521  
925-682-8410  
gsoncord.com**

**Worship Schedule:  
8:30 a.m. and 11:00 a.m.**

## A Message from our Interim Pastor

Saints. Thanksgiving. Christ the King. In November two church festivals and one secular holiday come together beautifully as we give thanks for the many gifts of God and for those saints who came before us in witnessing to God's greatest gift of all – the holy reign of Christ.

For All Saints Day this Sunday, Nov. 3, you are invited to bring a small memento of a loved one to place on a table in front of the altar. Along with the traditional reading of the names of loved ones who have passed in the last year, the mementos are a way to reflect on the lives of those who have touched our lives – and to remind ourselves that saints in heaven and on earth are joined as one great cloud of witnesses to the grace of the One who made us and redeemed us and sustains us in faith.

*"You are citizens with the saints and also members of the household of God, built upon the foundation of the apostles and the prophets, with Christ Jesus as the cornerstone." Ephesians 2:19-20*

Thanksgiving is a holiday that too easily gets lost in the secular "Christmas" spending frenzy (which now begins in October!). But, we can reclaim this as a day to intentionally give thanks for all that God has given us – and not only food and material goods (of which some have much more than others), but also our relationships, our skills and talents, the beauty of nature, the questions of our hearts and, most of all, God's undying, transforming love. Some of you help serve through Friends Feeding Friends, SHARE or the First Lutheran Thanksgiving dinner, and many help support such ministries with your donations, giving thanks with your hands as well as your voices.

*"I am the bread of life. Whoever comes to me will never be hungry, and whoever believes in me will never be thirsty." John 6:35*

We end the church year with Christ the King (or Reign of Christ) Sunday on Nov. 24. Where else but in Christ do we see a *servant* ruler? What does it mean to humanity that God took on human form to *die and conquer death* for humankind? How would the world be different if each of us used our power to serve the least, the last and the lost, rather than for our own security or status?

*Continued on Page 2*

*Interim Pastor Message - Continued from Page 1*

We who call ourselves followers of Christ take seriously that we are called to imitate Christ's self-giving love. What does that look like in your life today?

*"Through Christ God was pleased to reconcile to God's self all things, whether on earth or in heaven, by making peace through Christ's blood on the cross." Col. 1:20*

In the chill of November, may our hearts turn warmly toward thanksgiving for the hope we have in Christ. And don't forget to congratulate Lauren and Erin Wardle and Jacob Mollwitz, who made their Affirmation of Baptism (Confirmation) last week on Reformation Sunday. Give thanks for these young saints among us!

– Interim Pastor Lori Eickmann

### **NEWS FROM PASTOR RALPH SUPPER**

Dear friends,

Like Paul, "I thank God for you every time I remember you in prayer." I still recall my short time preaching at Good Shepherd fondly. That is why I'm excited to share with you that I have accepted a call as associate pastor of Lutheran Church of the Resurrection in Granite Bay. The Spirit has really revealed a great partnership between us.

My wife and I are also excited to live closer to her family as well. I will most likely be installed there early in 2014 and would love to have anyone present who wants to celebrate what God is doing through my call there. Thank you again for your support and your excitement about this call to Lutheran Church of the Resurrection. I continue to pray that you are unified, through Christ, as one body of believers.

Lookin' up,  
Pr Ralph Supper

#### **Sock it to 'Em with a Sweet Twist**

We are collecting Halloween candy and socks/mittens/beanies for the next couple of months for distribution at the December Friends Feeding Friends lunch at the North Concord Shelter. Bring donations to the box in the narthex or church office.

For more information or to be more involved contact Dana Deniston (925)768-9087 or Linda Rodemsky (925)864-9266  
friendsfeedingfriends@yahoo.com.

#### **Wanted! S, B, C, & Gs**

We are seeking:

- New crew socks (all sizes)
- New or gently used blankets, sleep bags
- Coats (all sizes)
- Gloves
- Sample size toiletries

These items will be distributed at the **"Giving Thanks at Thanksgiving"** dinner offered at First Lutheran Church on Thanksgiving Day. *Monetary donations are also welcome.* Please bring donations to First Lutheran Church, 4000 Concord Blvd., Concord. Questions? 925-270-0984.

## Interim Ministry Update, November 2013

### Interim process: growth edges

Remember the mantra of interim ministry: The time of interim ministry is *first* about looking at your congregational dynamics and *then* about calling your new pastor. The point is to take a look at what is and isn't working well so that you can build on the positives and work on the growth edges before the new pastor arrives.

In the past year, many of you have participated in this process through casual or scheduled conversations, the survey, the visioning events, and by being involved in the life of GSLC. I am thankful for your willingness to work toward making the partnership with your next pastor healthy and rewarding!

One of the key growth edges that many of you have named is that negativity (internal and also toward synod leadership) and malaise ("we're in a holding pattern") can creep in, which undermines forward movement. *Naming* that dynamic is the first step to changing it. The second step is *making the effort* to change those tapes in our heads that replay negative messages. For example, make a point to notice that you are *not* in a holding pattern, that positive changes have already happened, evidenced by everything from the addition of new members to the fact that for transparency in the call process, the congregation will get to review the Ministry Site Profile before it is finally submitted (see below). Let's help one another notice the positives and discard those old, negative tapes.

In the hope of learning more about changing conflict dynamics in congregations, I will be attending a weeklong mediation training later this month, offered in Redwood City by the Lombard Mennonite Peace Center of Illinois. I'll report back on that next month. (This training is open to lay leaders too!)

### Call process: update

With the rough draft in hand, your Call Committee is now working to complete the sections of the Ministry Site Profile (MSP) that require some input from the Church Council. After that, Rev. Nancy Nelson, bishop's associate, and the congregation will have a chance to read the profile and offer feedback.

Please note that the congregation is *not* being asked to re-write the MSP. Your call committee has spent hours putting together this profile to reflect the strengths, hopes, challenges and needs of GSLC. Rather, the congregation is being asked to let the call committee know if the MSP reflects the discussion and input that came from the visioning events held over the summer. (If you did not attend these events, you can read the MSP to get a sense of the outcome of the visioning process.)

May the Spirit bless this on-going journey toward a hopeful future!



### Leisure Lunch News

Join us on Tuesday, December 3, for a festive holiday luncheon! We won't be meeting in November. Have any questions or just want to chat? Call Susan or Bob Ripley at 925-827-9717.



Bob Ripley also would like to thank the many folks who have wished him well through their prayers, cards and calls during his recent illness. Bob says, "Thank you from the bottom of my heart. Susan and I are looking so forward to the next get-together with our special Leisure Lunchers in early December. Blessings to one and all." See you in December!

## November Birthdays

Karen Vetterli	05
Erika Berg	06
Christopher Chaplin	06
Ron Figueroa	07
Everett Roza	07
Alexander Bohling	09
Jessica Olmedo	09
Wendy Pritchard	09
Laura Carlson	10
Daniel Johnson	13
Geralyn Koehler	14
Jon Moss	17
J.R. Oehninger	19
Ruth Lee	20
Sharon Peterson	23
Wayne Sarchett	25
Heidi Moss	27
Zachary Hein-Silva	28
Joanne Erickson	29



## JOIN GOOD SHEPHERD YOUTH FOR CHRISTMAS CAROLING

You are invited to join Good Shepherd youth to go caroling on Sunday, December 8. We will be meeting at the church at 2:00 p.m.

Yes, we are kicking off the Christmas Season and one thing we are doing is going caroling. We want to visit our homebound friends and others who would like a special visit. Perhaps you have a friend we should visit.

We would like to have Good Shepherd members and friends join us. We plan to have "canned" music, so it is not acapella!

No auditions! We will arrange carpooling when we gather at 2:00 p.m. on Sunday, December 8.

When we return to the church we will have treats and maybe a little more singing!

Please contact Herb Yonge if you would like to join us and/or know a special person we should plan to visit.



## Holiday Happenings Around Town

Friday, November 15, 2013 — 7:00 p.m.  
First Evangelical Lutheran Church  
4000 Concord Boulevard, Concord, CA

Admission is free  
Offering received

Presents: November Nocturnes  
Tapestry, Vocal and Handbell Ensemble  
Cindy Krausgrill, Director



Friday, December 6, 2013 — 7:30 p.m.  
St. Stephen's Episcopal Church  
66 St. Stephen's Drive in Orinda

Admission is free  
Offering received

Presents: 20th Annual *Messiah* Sing!  
Chamber orchestra and soloists  
Robert Train Adams, Director



***Come and sing or listen!***

## Thanksgiving Dinner ~ Good Shepherd Style

OUR ANNUAL THANKSGIVING DINNER AT GOOD SHEPHERD LUTHERAN CHURCH WILL BE HELD ON SUNDAY, NOVEMBER 24TH AT 5:00 P.M. IN FELLOWSHIP HALL.

ALL ARE WELCOME TO JOIN US FOR A TURKEY DINNER WITH ALL THE TRIMMINGS.

A SIGN-UP POSTER WILL BE IN THE CHURCH NARTHEX SOON, SO WE CAN KNOW HOW MANY TO EXPECT FOR DINNER.



THERE IS NO CHARGE,  
BUT A FREE WILL OFFERING WILL  
BE RECEIVED.

IF YOU CAN HELP OUT WITH THE  
DINNER OR HAVE ANY QUESTIONS  
CONTACT EMILIE PATTON AT:  
[eeeyoreishappy@hotmail.com](mailto:eeeyoreishappy@hotmail.com)

## Wedding Anniversaries

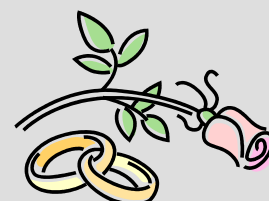
Richard and GERALYN  
Koehler  
November 10, 1990

Dan and Lucille  
Pierson  
November 14, 1952

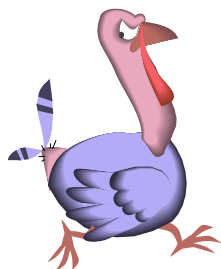
Joe and Faye  
Yarbrough  
November 22, 1953

Wayne and Marilyn  
Sarchett  
November 28, 1959

Mike and Janet  
Carzino  
November 30, 1958



## Help Our Turkey Lose All His Feathers Before Thanksgiving!



Pluck a feather in the narthex, attach a grocery gift card for any amount and bring the card and feather to the church office during the week. Friends Feeding Friends will distribute the gift cards with Thanksgiving groceries to those in need." Our turkey and those we are able to help thank you! Questions: Contact Dana Deniston, Linda Rodemsky or [friendsfeedingfriends@yahoo.com](mailto:friendsfeedingfriends@yahoo.com)

## GOOD SHEPHERD INCOME STATEMENT AS OF SEPTEMBER 30, 2013

	ACTUAL	BUDGET	OVER (UNDER) BUDGET
INCOME:			
Pledged	\$109,604	\$114,689	\$ (5,085)
Unpledged	18,898	20,064	(1,166)
Other (Tower, Rent, etc.)	83,517	85,218	(1,701)
TOTAL INCOME	212,019	219,971	(7,952)
LESS TOTAL EXPENSES	(195,178)	(215,377)	20,199
NET INCOME	\$ 16,841	\$ 4,594	\$ 12,247

Before bed  
this Saturday  
don't forget  
to change  
your clocks!



This Sunday, November 3 at  
2:00 a.m. the clocks will  
fall back 1 hour.

Come March 9, 2014, we will  
return to Daylight Savings Time!

**Thank you for your  
Financial Support**



## Introducing our New Advent Paraments

by Wilma Seppala

The new blue paraments— altar, pulpit, and lectern hangings— are symbolic in their color and designs for Advent, the first season of the church year.

In this century, blue was introduced in Denmark as a replacement for violet because it signifies hope and truth, while violet traditionally denotes penitence and mourning. The character of the Advent season is a preparation for the coming of the Messiah into the world and into our hearts, and underlying joy and anticipation in the first and second coming of our Lord.

The sun is a symbol for Advent taken from Malachi 4:2 “But for you who fear my name the sun of righteousness shall rise, with healing on its wings.” To identify the sun as a Christ symbol, a monogram IHC has been placed in the center. This is an abbreviation for the Greek word IHCOYC which means Jesus. The little bar on the H means it is a an abbreviation.

The Messianic Rose is another symbol for Christ, getting its meaning from Isaiah 35, where it is stated, “The desert shall blossom as a rose at the coming of the glory of God,” meaning Christ’s birth.

On the pulpit and lectern are stars, the big one with five points is the Christ Star, and the smaller stars depict the followers of Jesus.

The new paraments were designed by Wilma Seppala and were assembled and sewn by Betty Jacobsen. Wilma and Betty shared the hand embroidery work.



**Reformation Sunday  
Confirmation  
October 27, 2013**

Thank you to our photographer Joe Carlson



**Congratulations to Lauren and Erin Wardle and Jacob Mollwitz  
on their Affirmation of Baptism.**



## THE GOOD SHEPHERD EVANGELICAL LUTHERAN CHURCH OF CONCORD, CA

The October Council was called to order at 7:00 pm on October 9, 2013 by president Sue Hertless.

President Hertless recognized:

Leone McCullough's grandson, Travis Fiene, of Boy Scout Troop 465 for building and landscaping beautiful planters for the seating area along the sidewalk between the Sanctuary and Fellowship Hall. Kathy Price and Herb Yonge were recognized for contacting the Property Committee about the lack of landscaping outside Pastor Lori's office window, and with their permission planting a lovely garden there.

Pastor Lori was recognized for holding a service to bless the animals of church members.

Donna presented the devotional.

The members of the Nominating Committee for the 2014 Church Council have been announced. They are Jim Olson, Susan Metzger, Joe Carlson, Donna Albrecht, and Pastor Lori.

The Boy Scout Troop has outgrown the space they have been using upstairs and will now be meeting in Fellowship Hall on Thursdays.

The second service needs a new computer to control the audio-visual aspects of the service. The council has charged Linda Rodemsky to have her son, Jamie, find an appropriate machine.

Laura provided a plan to cut costs by sending most members their monthly newsletter by email instead of the U.S. Post Office. Her proposal allows for paper copies to be made available in the Narthex and by mail to those who do not use email. Herb moved to accept Laura's plan for the newsletter; Leone seconded.

Worship & Music has noted a reduction in the performances by the Bell Choir because it lacks a director. Herb moved that we hire Magic Jaquez to lead the Bell Choir and she will be paid \$50 per once-a-week rehearsal and an additional \$50 per performance; Emilie seconded.

Property Committee has found that using the church office for dropping off items for FFF is no longer satisfactory. They will be building a donation box near the gas meters. It will be locked at night and too small for an adult to sleep in.

The lease on the communication tower is still under negotiation.

Respectfully submitted, Donna Albrecht  
Council Secretary

On October 5, 2013 Presiding Bishop Elect The Reverend Elizabeth A. Eaton was installed into office, replacing The Reverend Mark Hanson as the Presiding Bishop of the Evangelical Lutheran Church in America.

**Presiding Bishop  
Elizabeth Eaton**




Our Churchwide offices are located at the Lutheran Center in Chicago near the O'Hare Airport.

We are one of 10,000 ELCA congregations. We are members of the Sierra Pacific Synod serving with 200 congregations in No. California - No. Nevada. Our Synod bishop is The Rev. Mark Holmerud. Our synod is one of 65 regional synods that make up the ELCA.

We pray that the Holy Spirit will guide our future together.



# November 2013

Sunday	Monday	Tuesday	Wednesday	Thursday	Friday	Saturday
8:30 a.m. Worship (CH) 9:30 a.m. Refreshment 9:50 a.m. Choir Practice 11:00 a.m. Worship (FH) Noon Confirmation (FR) 6:00 p.m. Women NA (FH)					<b>1</b> NOON Council Packet Reports due in office	<b>2</b> 10:00 a.m. DVLC (FH)
<b>3</b> <b>All Saints Sunday &amp; Commitment Sunday</b> 9:30 a.m. Planning meeting for Advent Activities (FH)	<b>4</b>	<b>5</b> 3:00 p.m. Worship / Music Comm.. (FH) 7:30 p.m. GS Book Club (FR)	<b>6</b> 7:00 p.m. NA (FH)	<b>7</b> 9:00 a.m. Senior Food (FH) 2:00 p.m. Finance Comm. (FH) 6:30 p.m. Boy Scouts (FH) 7:00 p.m. Property/Long Range Offi	<b>8</b> Noon Council Packet Reports due in Offi	<b>9</b> Noon Private Memorial Service (FR)
<b>10</b> See schedule above.	<b>11</b> <b><i>Veteran's Day</i></b>	<b>12</b> 7:00 p.m. Council (FH)	<b>13</b> 9:00 a.m. FFF / Tabernacle 1:00 p.m. Quilters (FH) 7:00 p.m. NA (FH)	<b>14</b> 10:00 a.m. Ruth's Circle (FH & FR) Noon DVLC Board (FH) 6:30 p.m. Boy Scouts (FH)	<b>15</b> 9:00 a.m. FFF /Amerprise (Kitchen)	<b>16</b> 9:30 a.m. Friends Feeding Friends (Kitchen / FH))
Pastor Lori on Vacation						
<b>17</b> See schedule above. 1:00 p.m. Youth Group	<b>18</b>	<b>19</b>	<b>20</b> 7:00 p.m. NA (FH)	<b>21</b> 9:00 a.m. Senior Food (FH) 6:30 p.m. Boy Scouts (FH)	<b>22</b>	<b>23</b>
Dn. Rowena Henry	Pastor Lori attending a Mediation Training					
<b>24</b> 5:00 p.m. <b>GS THANKSGIVING DINNER (FH)</b> See schedule above.	<b>25</b> December Newsletter Composed — Articles Due!	<b>26</b>	<b>27</b> 1:00 p.m. Quilters (FH) 7:00 p.m. NA (FH)	<b>28</b> <b>Thanksgiving Day</b> Church Office Closed 	<b>29</b> Church Office Closed	<b>30</b>

## Friends Feeding Friends

### An outreach ministry that serves the needy in our county

#### Friends Feeding Friends Highlights for the Past Month

Sarah Jean's  
Dream at age 4

—  
"So people who are  
really hungry  
have food."



- 202 Grocery bags distributed**
- 180 Hot Meals provided**
- 18 People helped with household furnishings**
- 14 Churches that helped FFF**
- 9 Shelters/Agencies that referred clients to FFF**

FFF provided over 250 warm jackets and coats, and grooming supplies for Project Homeless Connect, a one day, annual, multi-service event designed to help homeless link with social services.

FFF provided nutritious food and beverages for the fire fighters fighting the Mt. Diablo fires.

FFF is still the county's #1 choice for furnishing clients transitioning from homelessness to housing. FFF has been warned that the county will cycle homeless through the shelters faster and more will be housed to try to reduce homelessness in the county. We are preparing for the increased volume.

In the past 6 months, we furnished a number of vets. The last homeless survey showed that most homeless in Martinez were vets who were living near VA. It became a priority to house them, and FFF furnished them. Loaves and Fishes dining room numbers in Martinez have now gone down as a result. We are proud to be a part of this process!

Our next FFF lunch at the shelter is on November 16, 2013. Meet at Good Shepherd at 9:30 a.m. to prep or at the shelter at noon to serve. All are welcome to help at the lunch or any other time!!

Items needed this month: Thanksgiving groceries, twin, full or queen size beds, end tables, dressers, coffee tables, new bed pillows, travel size shampoo, conditioner and lotion. We appreciate all donations!

Have questions, want to help or know of someone needing help? Contact Dana Deniston (925)768-9087 or Linda Rodemsky (925)864-9266 or email: friendsfeedingfriends@yahoo.com

For we are  
God's  
workmanship  
created in  
Christ Jesus  
to do good  
works, which  
God prepared  
in advance for  
us to do.  
Ephesians  
2:10

Good Shepherd  
Lutheran Church  
4000 Clayton Road  
Concord, CA 94521  
925-682-8410  
gsconcord.com

Located east of the  
Salvation Army  
church between  
West Street and  
Mendocino Avenue  
Concord, CA

Loaves & Fishes  
catering kitchen:  
510 Garcia, Suite H  
Pittsburg, CA

Thank you once  
more to all of  
our faithful  
supporters.  
Because of you,  
we can reach so  
many more!

The North  
Concord  
Shelter:

2047 Arnold  
Industrial Way,  
Concord, CA  
Parallel to  
Highway 4

**Know someone  
who needs help?**

Call the Homeless  
Hotlines at  
800-799-6599 or  
800-808-6444.

Call the Bay Area  
Rescue Mission at  
510-215-4868.

Call the Contra  
Costa Crisis Cen-  
ter at Call 211.

## Worship Assistants November 3 – December 1, 2013

Date	Time	Assisting Minister	Communion Assistant	Lector	Acolyte, Torchbearer	Crucifer	Altar Guild	Greeters	Ushers	Sound Ministry	Communion to Shut-Ins	Coffee Ministry	Counters	C.O.D.
11/03	8:30	Kelly Schaefer	Duane Peterson Sue Hertless	Sue Hertless	Lauren Wardle	Erika Berg	Kathy Price Elsa Welsh Heidi Moss Cindy Rogelstad	Jauire and Else Welsh	Jon and Heidi Moss	Jamie Rodemsky		Doug and Reyanne Freeman	Joe Carlson and Paul Rusch	Jim Olson
	11:00			Sherry Chaplin				Victor and Aimee Olmedo						
11/10	8:30	Candace Bradley	Kelly Schaefer Mike Albrecht	Donna Albrecht	Johnathon Berg	Doug Olson	Jan Harmon Pam Dietz Willajean Rogelstad Linda Mahloch	Ron and Kathy Price	Ron Figueroa and Tom Lingel	Jamie Rodemsky		Jon and Heidi Moss	Jan Carzino and Betty Jacobsen	Linda Rodemsky
	11:00			Linda Rodemsky				Alden Johnson						
11/17	8:30	Duane Peterson	Sue Hertless Susan Metzger	Ingrid Burns	Justin Berg	Sam Buchholz	Laura Carlson Elizabeth Kich Sue Hertless	Willajean Rogelstad	Doug and Reyanne Freeman	Jamie Rodemsky	Duane Peterson	Ron and Kathy Price	Jan Carzino and Betty Jacobsen	Donna Albrecht
	11:00			Sherry Chaplin				Jay Neyenhouse						
11/24	8:30	Drew Cremisio	Duane Peterson Rosemary Fassl	Rosemary Fassl	Doug Olson	Erin Wardle	Ione Bantly Leone McCullough Karin Bohling	Ron and Mary Figueroa	Gary and Linda Mahloch	Jamie Rodemsky		Gary and Linda Mahloch	Karen Bohling and Gordon Monroe	Mark Deniston
	11:00			Linda Rodemsky				Connie Summers						
12/01	8:30	Candace Bradley	Susan Metzger and Sue Hertless	Sue Hertless	Ryan Kich	Erika Berg	Dottie Davis Donna Abeyta Nancy Knapp	Greg and Kristi Buchholz	Jon and Heidi Moss	Jamie Rodemsky		Greg and Kristi Buchholz	Karen Bohling and Gordon Monroe	Sue Hertless
	11:00			Sherry Chaplin				Donna Abeyta						

# *Good Shepherd Lutheran Church*

*4000 Clayton Road*

*Concord, CA 94521*



**Evangelical Lutheran Church in America**  
God's work. Our hands.

## *Good Shepherd Lutheran Church*

*Concord, CA*

### *Executive Committee:*

**President:** Sue Hertless, **Vice President:** Victor Olmedo, **Secretary:** Donna Albrecht  
**Member-at-Large:** Laura Mott

### *Congregational Council*

Donna Albrecht, Mark Deniston, Sue Hertless, Leone McCullough, Jon Moss, Laura Mott,  
Victor Olmedo, Jim Olson, Emilie Patton, Linda Rodemsky, Herb Yonge

### *Ministry Staff:*

**Interim Pastor:** Lori Eickmann - [pastorlori@me.com](mailto:pastorlori@me.com)

**Office Administrator:** Laura Mott - [lauramott@gsconcord.com](mailto:lauramott@gsconcord.com)

**Director of Instrumental Music:** Open

**Interim Organist:** Lynne Davies

**Choir Director:** Phoebe J. Rosquist - [phoebe@netzero.net](mailto:phoebe@netzero.net)

**Contemporary Music Leader:** Tom Deans Flegel - [tdeans08@gmail.com](mailto:tdeans08@gmail.com)

**Sound/Technology:** Jamie Rodemsky - [jamier1263@gmail.com](mailto:jamier1263@gmail.com)

**Treasurer:** Lynne Davies - [finance@gsconcord.com](mailto:finance@gsconcord.com)

**Financial Secretary:** Laura Mott